

IQ-1200

4-Channel Power Meter



- Four optical channels and a flexible virtual channel
- Graphical display mode
- Timed and conditional multi-channel data acquisition
- Wide variety of photodetectors available

EXFO

4-Channel Optical Power Meter

The IQ-1200 4-Channel Power Meter module, a fundamental element of the IQ solution, delivers exceptional performance, flexibility, user friendliness, and extensive integration capabilities. It offers all the traditional functions of a power meter — absolute and relative power measurements, offset

nulling, etc. — plus full acquisition capability, unique virtual channel features, and a powerful graphical display. The IQ-1200 incorporates four independent photodetectors for multi-channel monitoring or multi-component testing.

Excellent Performance

- Uncertainty ± 0.2 dB
- Linearity ± 0.015 dB
- Resolution 0.001 dB
- Power range +25 to -85 dBm
- Wavelength resolution 1 nm

Available Detectors

- Silicon (Si)
- Germanium (Ge)
- High-power Germanium (GeX)
- Indium Gallium Arsenic (InGaAs)

The IQ-1200 is available with adapters for all standard fiber-optic connectors.

The IQ Solution

The IQ-203 mainframe and the IQ-206 expansion units house the IQ-1200 module. Together, the IQ-203 and the IQ-206 can support up to 27 modules; therefore, 108 individual power meter channels can be simultaneously monitored. Using the GPIB interface, two or more systems can be linked together and provide a virtually unlimited number of channels. The IQ-1200 Windows™ -compatible application software offers unprecedented user friendliness and guarantees improved productivity.

Because the IQ system is a modular design based on a familiar programming environment, high level integrated applications offer an efficient solution to many common measurement problems. These high-level applications provide multi-module control and, therefore, greatly simplify any complex or repetitive measurement procedure. EXFO's custom engineering team will be pleased to design any application to meet your specific requirements.

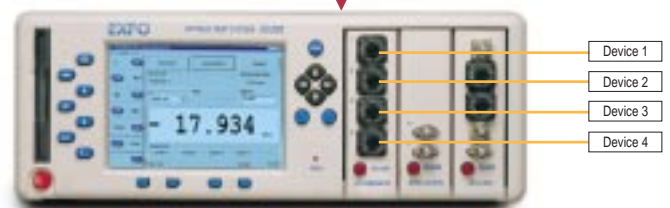
The following important features are included:

- Timed and conditional (trigger) four-channel data acquisition
- Virtual channel
- Absolute, relative, and offset display modes
- Power displayed in dBm, dB, or watt
- Individual channel identification
- Dark current nulling

The IQ-1200 is ideally suited for the following measurement applications:

- System monitoring
- Component monitoring
- Multi-component testing
- Remote monitoring and alarm activation
- WDM component testing
- Multi-port coupler testing
- Insertion loss measurement
- Linearity verification
- Power meter verification
- Source stability measurements
- And many others

Requires an IQ-1200 4-Channel Power Meter.



Testing Tip

Use the IQ-1200 virtual channel to compare two optical channels that have the same power level. By defining the virtual channel as Channel 1 minus Channel 2, any deviation in either channel would be readily apparent by only monitoring the virtual channel.

Advanced Data Acquisition

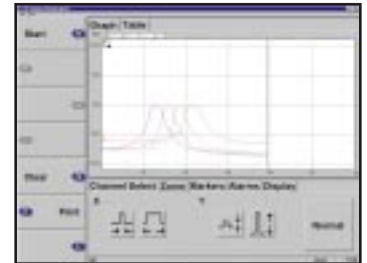
Reference Button

Take a power reference measurement by simply selecting a button.

Channel Identification

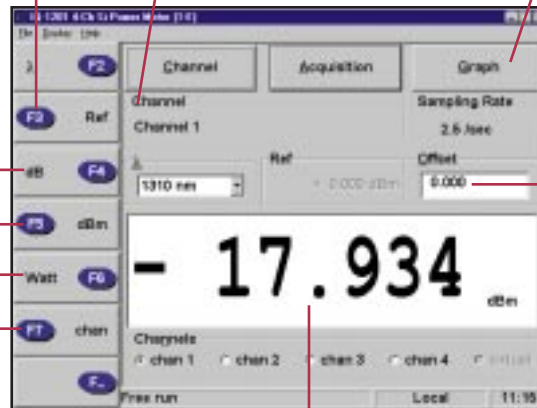
Enter any descriptive text that will help to identify the device or system under test.

Unique Graphical Display Mode



Display Units

Select display units of dB, dBm, or Watt.



Convenient Offset Feature

Enter an offset value in order to compensate for known power loss or gain.

Simple Channel Selection

Simply push this button to switch channels.

Variable Resolution

Select either 0, 1, 2, or 3 significant digits. Automatic resolution can be alternatively selected.

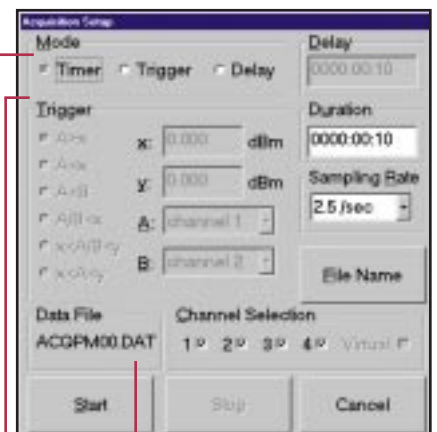
Simple, Flexible, and Familiar GUI

- WINDOWS™ interface.
- Easy control with software buttons, front panel keys, or keyboard.
- Multiple-user configuration storage.
- Simultaneous multiple applications for true multitasking.
- On-line help.

POWERFUL FOUR-CHANNEL DATA ACQUISITION

Multiple Modes

Select between timed, conditional, or delay data acquisition.



Multiple Trigger Conditions

Data acquisition will start as soon as the specified condition is met. Choose between the 6 available trigger conditions.

User-Named Files

Acquisition data is saved to a user-specified file on the IQ-203 hard or floppy disk.

SPECIFICATIONS

Model	IQ-1201	IQ-1202	IQ-1202X	IQ-1203
Detector type	Si	Ge	Ge (High power)	InGaAs
Detector size (mm)	1	1	2	1
Wavelength range (nm)	450 to 1100	750 to 1800	750 to 1700	800 to 1700
Power range ¹ (nm)	+9 to -85	+10 to -77	+25 to -65	+9 to -85
Uncertainty ² (dB)	± 0.2 (±5 %) (1000 to 1650 nm)	± 0.2 (±5 %) (1000 to 1650 nm)	± 0.2 (±5 %) (1000 to 1650 nm)	± 0.2 (±5 %) (1000 to 1650 nm)
Linearity ³ (dB)	± 0.015 (0 to -55 dBm)	± 0.015 (0 to -47 dBm)	± 0.015 (+10 to -35 dBm)	± 0.015 (0 to -55 dBm)
Power resolution (dB)	0.001 (+9 to -55 dBm)	0.001 (+10 to -47 dBm)	0.001 (+25 to -35 dBm)	0.001 (+9 to -55 dBm)
Wavelength resolution (nm)	1	1	1	1
Fiber type ⁴ (µm)	5/125 to 62.5/125	5/125 to 62.5/125	5/125 to 62.5/125	5/125 to 62.5/125

MECHANICAL SPECIFICATIONS

Temperature	operating	0° to 50°C	32° to 122°F
	storage	-40° to 70°C	-40° to 158°F
Relative humidity ⁵		0 to 80 % non-condensing	
Dimensions (H x W x D)		12 x 3.8 x 26.2 cm	4 ³ / ₄ x 1 ¹ / ₂ x 10 ⁵ / ₁₆ in.
Weight		0.70 kg	1.55 lb

NOTES

- From 0° to 30°C/32° to 86°F at 850 nm for IQ-1201 at 1310 nm for IQ-1202, IQ-1202X and IQ-1203.
- At 23°C ±1/73.4°F add 1% to uncertainty outside these ranges.
- Measured at constant temperature in 0° to 40°C/32° to 104°F range.
- 100/140 µm fiber with special fiber optic adapter (FOA).
- Measured in 0° to 40°C/32° to 104°F range.

ORDERING INFORMATION

IQ-120X-XX	
Detector code	
1 = Silicon	
2 = Germanium	
2X = Ge High Power	
3 = InGaAs	
Connector code	
FOA-216 = SMA-905, SMA-906	FOA-254 = NTT-type SC PC, SC APC, SC ultra PC
FOA-222 = NTT-FC, NEC-D3, FC PC, FC APC, FC super PC, FC ultra PC	FOA-76 = FSMA 2.5 HMS 10/AG, HFS-10/AG, HFS-13/AG
FOA-28 = DIN-LSA D-4106, C-436	FOA-78 = Radiall EC
FOA-232 = AT&T type ST and ST PC, ST super PC, ST ultra PC	FOA-84 = Diamond 2.5 HMS-10, HFS-13
FOA-40 = Diamond 3.5, HMS-0, HFS-3	FOA-96 = E2000

SOFTWARE OPTIONS

OCX controls and LabVIEW drivers

STANDARD ACCESSORIES

Instruction manual, 4 fiber-optic adapters, and Certificate of Calibration

EXFO is certified **ISO 9001** and attests to the quality of its products. These products are accompanied by a 24-month warranty and an excellent after sales support service.

Contact **EXFO** for prices and availability or to obtain the phone number of your local **EXFO** distributor.

This device complies with Part 15 of the FCC Rules. Operation is subject to the following two conditions: (1) this device may not cause harmful interference, and (2) this device must accept any interference received, including interference that may cause undesired operation.

EXFO has made every effort to ensure that the information contained in this brochure is accurate. However, we accept no responsibility for any errors or omissions, and we reserve the right to modify design, characteristics and products at any time without obligation.



1-800-663-3936
info@exfo.com
http://www.exfo.com



CORPORATE HEADQUARTERS 465 Godin Avenue, Vanier, QC, Canada, G1M 3G7 Tel.: (418) 683-0211 Fax: (418) 683-2170

EXFO AMERICA 903 North Bowser, Suite 360, Richardson, TX, 75081, USA Tel.: 1-800-663-EXFO Fax: (972) 907-2297

EXFO EUROPE Centre d'Affaires-Les Metz, 100, rue Albert Calmette, 78353 Jouy-en-Josas, France Tel.: +33 1 34 63 00 20 Fax: +33 1 34 65 90 93

GAP OPTIQUE DIVISION Granges-Saint-Martin #8 CH-1350 Orbe, Switzerland Tel.: +41 24 441 53 64 Fax: +41 24 441 53 67